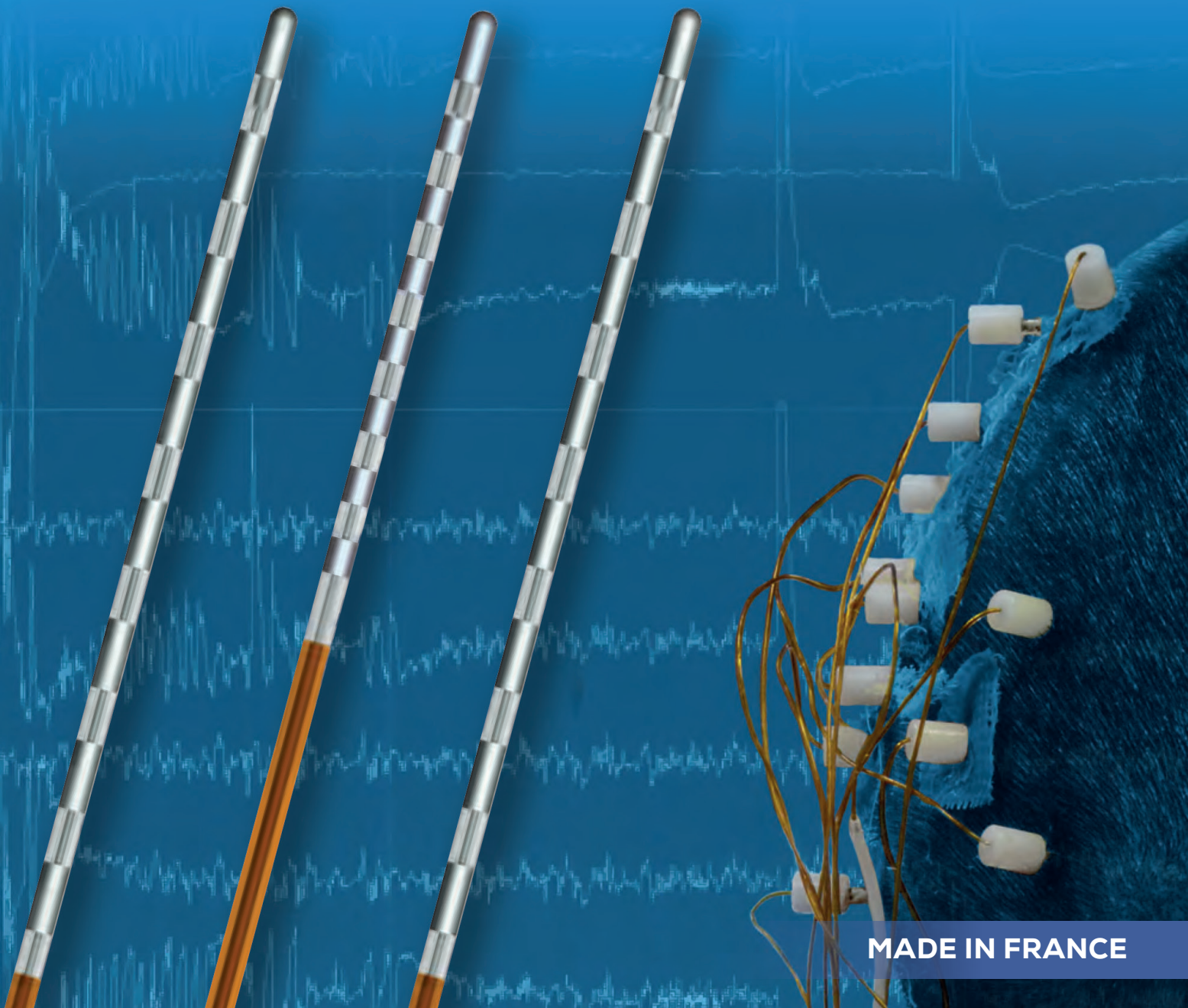
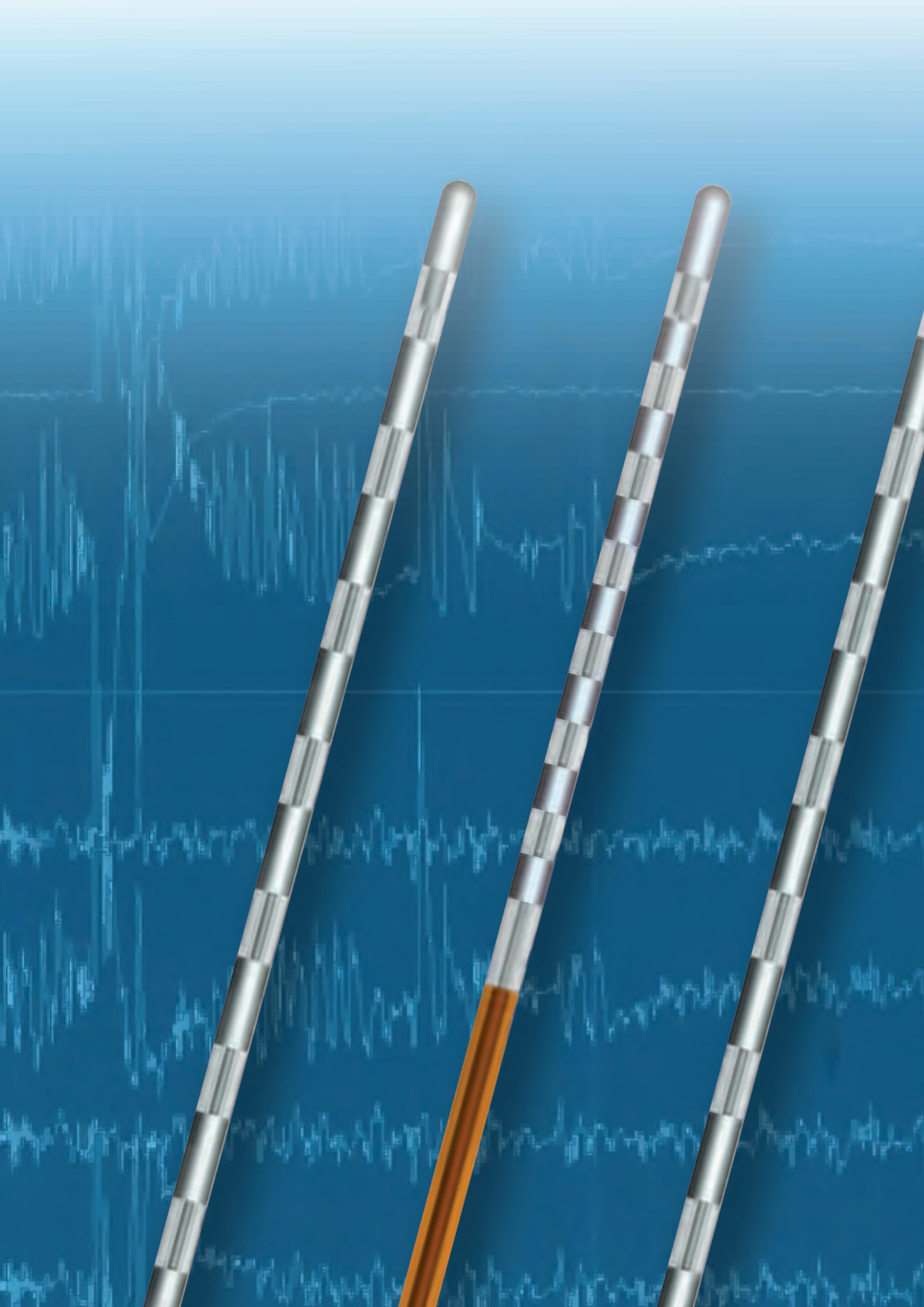




DEPTH ELECTRODES **ACCESSORIES** SEEG **STEREOTAXY**



MADE IN FRANCE





Our aim is to help curing patients by providing the best techniques, technology and services.

Our constant research for excellence has enabled us to bring you exclusive electrodes techniques and exclusive box for thermo lesion giving you the result at a speed of a switch.

Alcis has especially developed and marketed for more than 15 years a full range of products dedicated to the neurosurgical field and particularly the treatment of drug-resistant epilepsy.

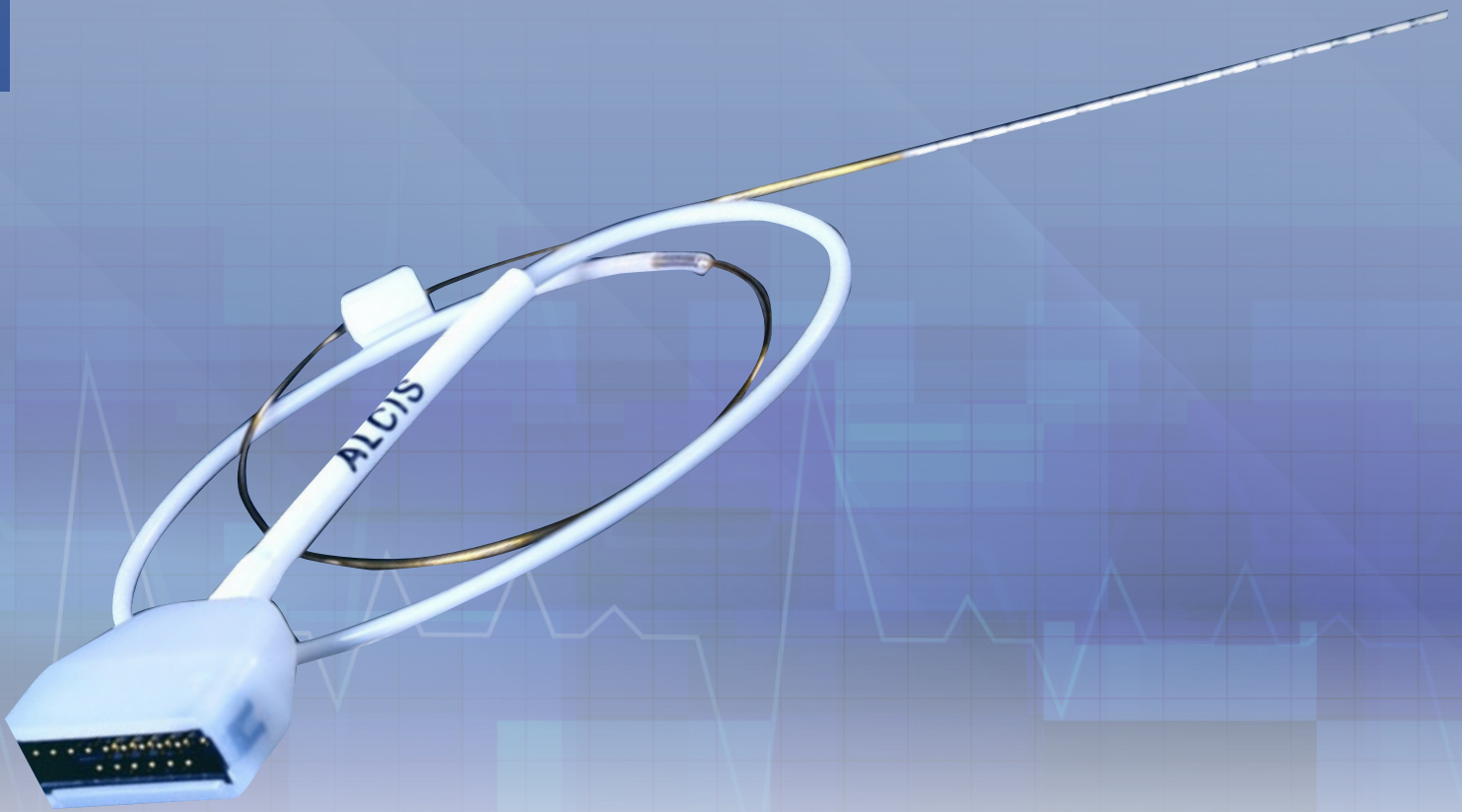
This achievement illustrates the skills of Alcis as an integrator of technologies and its know-how in or to manufacturing high-tech medical devices.

Summary

4		SEEG DEPTH ELECTRODES
9		SEEG RECORDING AND COAGULATION
13		ACCESSORIES
21		STEREOTAXY

SEEG DEPTH ELECTRODES

4

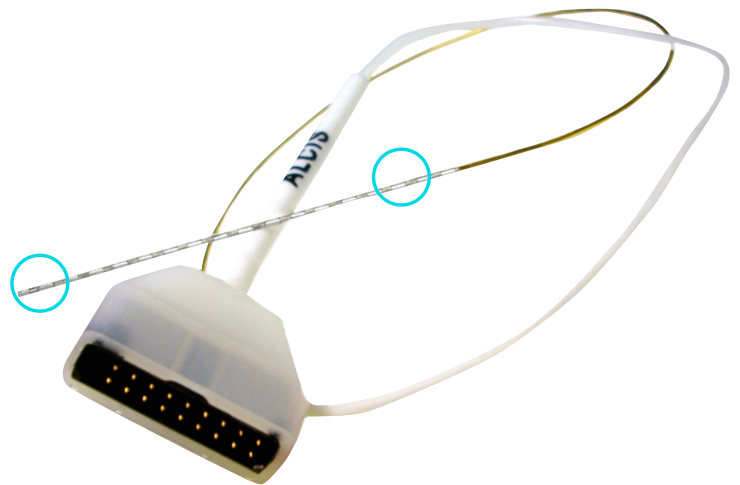


■ EPC Electrodes and Accessories

SEEG / COAGULATION / EPILEPSY

Range 2069-EPC

- > Made In France,
- > Thermo-Coagulation : Available, thanks to our CE marked Coagulation box BC3,
- > **Exclusive EPC, Step 2mm and 3,5 mm (CE marked),**
- > Distal Tip Contact,
- > From 5 to 18 contact,
- > Platinum and Iridium contact,
- > Diameter : 0.8 mm,
- > Atraumatic distal tip,
- > Light Connector,
- > Protector sheath for **"Touch less"** implantation,
- > **High resistance to bending,** (thanks to our exclusive technology)
- > Up to 2 weeks implantation,
- > **Guiding screws:** standard and **short.** (Alcis neuro exclusivity)



CE 1014 marked

2 CONTACTS TYPES

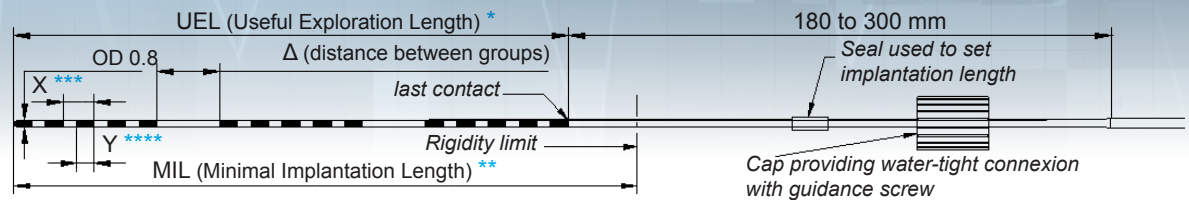
References	Standard electrodes	High resolution electrodes
Type	Type C	Type E
Ring Contacts	Standard ring contacts 2 mm	Standard ring contacts 1 mm
Tip	2 mm distal contact	2 mm distal contact

Designed to be used with Alcis guidance screw from range 2023-VG and 2023-VG-C.
 Compatible with Alcis accessories range 2023 / 2036 / 2069 (cf. IFU).
 Unitary sterile packaging. Single use.

Class III medical device - CE 1014 marked

■ Depth electrodes

SEEG / COAGULATION / EPILEPSY
Range 2069-EPC



* UEL = Useful Exploration Length, distance between the first and the last contact.
 ** MIL = Minimal Implantation Length, minimum length between the target and the proximal edge of the guidance screw.
 *** X = Contacts steps.
 **** Y = Ring contacts size.

■ Depth electrodes

SEEG / COAGULATION / EPILEPSY
Range 2069-EPC

RANGE 2069-EPC TYPE C



**** Y = 2 mm *** Contact step 3.5 or 4.0 mm S: Stock

References	Nb of contacts	Δ (mm)	UEL * (mm)	MIL ** (mm)	Avail.
2069-EPC-05C-35	5	-	16	26	S
2069-EPC-08C-35	8	-	26.5	36.5	S
2069-EPC-10C-35	10	-	33.5	43.5	S
2069-EPC-12C-35	12	-	40.5	50.5	S
2069-EPC-15C-35	15	-	51	61	S
2069-EPC-18C-35	18	-	61.5	71.5	S
2069-EPC-18C-40	18	-	70	80	S
2069-EPC-15C-35-3G-07	3 x 5	7	62	72	S
2069-EPC-15C-35-3G-11	3 x 5	11	70	80	S
2069-EPC-18C-35-3G-11	3 x 6	11	80.5	90.5	S

RANGE 2069-EPC TYPE E



**** Y = 1 mm *** Contact step 2.0 mm R: Request

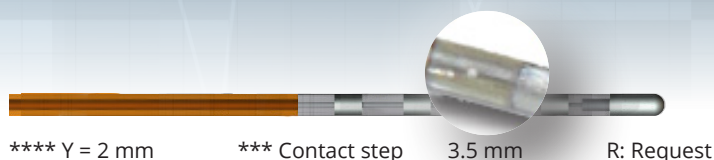
References	Nb of contacts	UEL * (mm)	MIL ** (mm)	Avail.
2069-EPC-15E-20	15	30	40	R
2069-EPC-18E-20	18	36	46	R

Depth electrodes

2069-EPC type Micro-Macro

ALCIS micro-macro intracerebral **Depth Electrodes** are multi-contacts electrodes, intended to presurgical epilepsy diagnosis, designed for Stereo-ElectroEncephaloGraphy recording (**SEEG**), **short stimulation and thermocoagulation as a therapeutic alternative to conventional epilepsy surgery.**

RANGE 2069-EPC TYPE acb



2069-EPC MICRO MACRO

Two scales recording > micro and macro.

Coagulation mastered on macro contacts

> Impedance driving, eased and secured via connection box.

Patient / user comfort > distal part perfectly smooth, Minimal Implantation Length (MIL), reduced (10 mm after the last macro contact).

Other features:

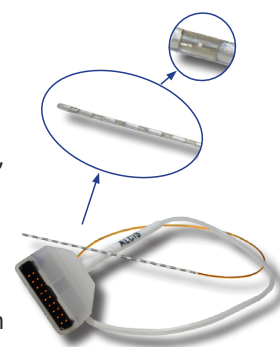
> Platinum iridium contacts & wires > Better signal collection / MRI compatible.

> Distal OD ≤ 0.8 mm / proximal OD ≈ 1.5 mm > Less invasive / good mechanical strength.

> Compatible with Alcis standard implantation, connection and coagulation accessories from ranges 2023 and 2069 (refer to IFU).

Single use device / **class III medical device - CE** 1014 marked. Packaged in sterile individual pouch.

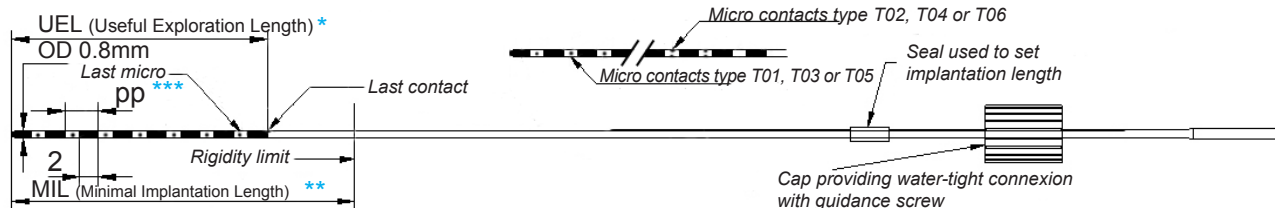
Consult us to identify the compatible recording solutions.



Reference	Macro contact	Micro contact	Micro size	Micro contacts positioning	UEL * (mm)	MIL ** (mm)	Avail
2069-EPC-5C9-35T02	5	9	37 µm	3 at 120°	16	26	R
2069-EPC-5C9-35T06	5	9	17 µm	3 at 120°	16	26	R
2069-EPC-8C9-35T06	8	9	17 µm	3 at 120°	26.5	36.5	R
Other micro contacts configurations possible - consult us							
2069-EPC-aXb-ppTxx	1 to 9	1 to 9	37, 20 or 17 µm	1 3 at 120°	-	-	R

a = number of macro contacts
b = number micro contacts
Txx = micro contacts type

Avail.: Product availability - S = Stock, R = on Request



* UEL = Useful Exploration Length, distance between the first and the last contact.

** MIL = Minimum Implantation Length, minimum length between the target and the proximal edge of the guidance screw.

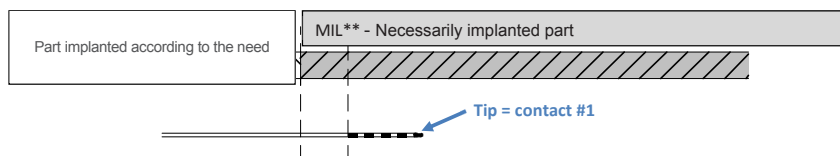
*** pp = 3.5mm = macro contacts step. NOT CE MARKED. * Manufacturer: ALCIS - Besançon, France.

■ ALCIS Neuro SEEG electrodes range chart

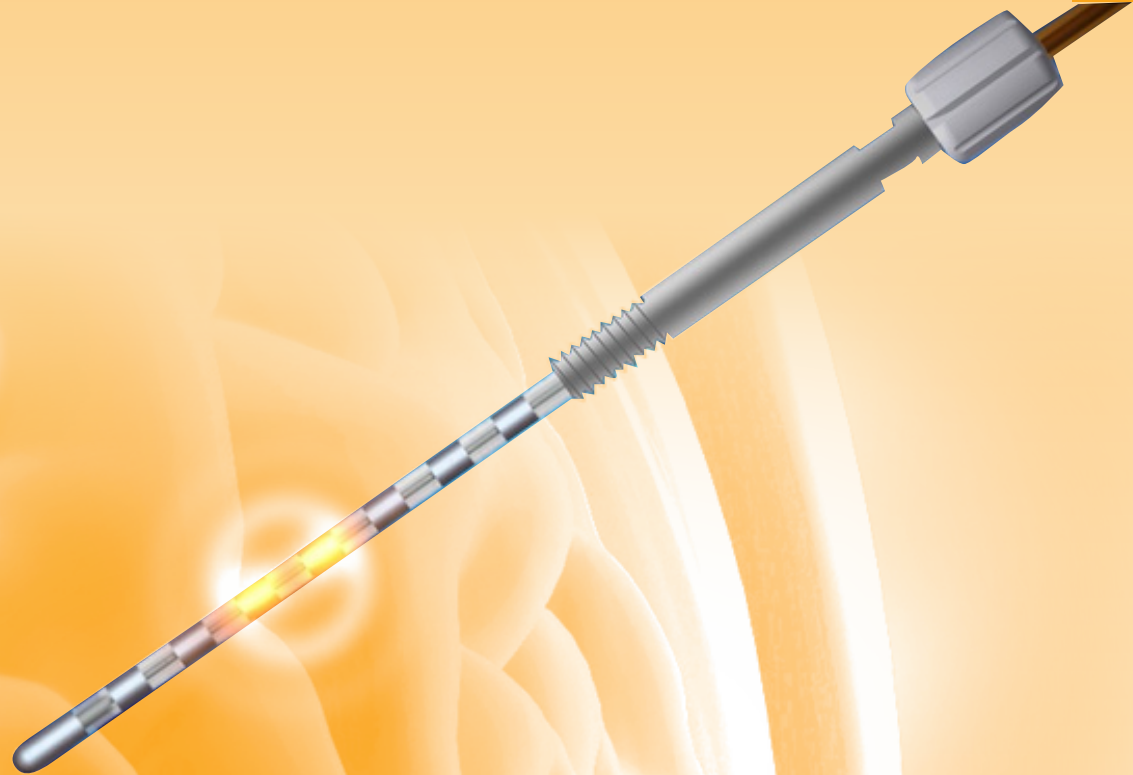
Features	Advantages	Benefits
Tip contact	Full length Signal retrieving	Minimum Invasive SEEG
Smooth tip contact	Atraumatic	Safety for patient
Platinum Iridium contact and wire	Better signal and recording	MRI compatible Safety for patient
Light Connector	Less total weight	More comfortable for patients
High resistance to bending	High resistance	Higher safety

References	Nb contacts	UEL * (mm)	MIL ** (mm)	Type	*UEL= Useful Exploration Length **MIL= Minimal Implantation Length
2069-EPC-18C-35-3G-11	3x6	80,5	90,5		
2069-EPC-15C-35-3G-11	3x5	70	80		
2069-EPC-15C-35-3G-07	3x5	62	72		
2069-EPC-18C-40	18	70	80	4.0	
2069-EPC-18C-35	18	61,5	71,5		
2069-EPC-15C-35	15	51	61		
2069-EPC-12C-35	12	40,5	50,5		
2069-EPC-10C-35	10	33,5	43,5		
2069-EPC-08C-35	8	26,5	36,5		
2069-EPC-05C-35	5	16	26		
2069-EPC-15E-20	15	30	40	HR	
2069-EPC-18E-20	18	36	46	HR	

Alcis Neuro exclusive



SEEG RECORDING AND THERMOCOAGULATION



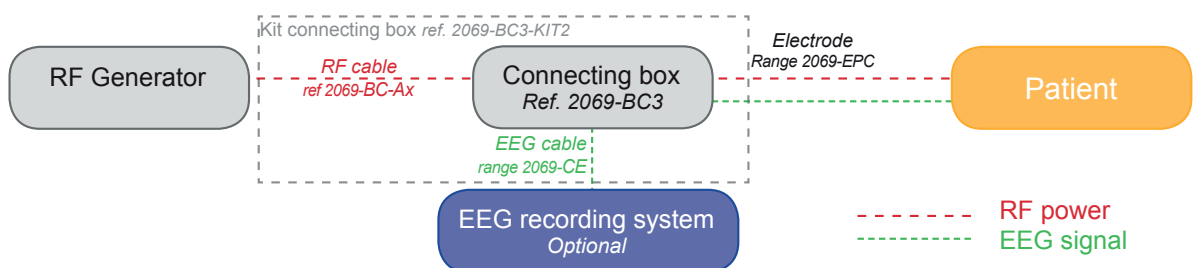
■ GLOBAL COAGULATION SOLUTION

Generator - Kit Connecting box - Electrode
Range 2069

The Alcis coagulation depth electrodes are **intended to perform thermo-coagulation "in-situ"**, in association with a RF generator, as therapeutic alternative to conventional epilepsy surgery (especially for patients for who conventional surgery is excluded).

Alcis proposes a Global Solution for Coagulation that includes the following devices:

- > Kit Connecting box (ref. 2069-BC3-KIT2)
- > Depth coagulation electrode (range 2069-EPC),
for technical information, refer to 2069-EPC-FT technical form.



Please note that Alcis does not provide the EEG recording system. Ask for compatibility information.

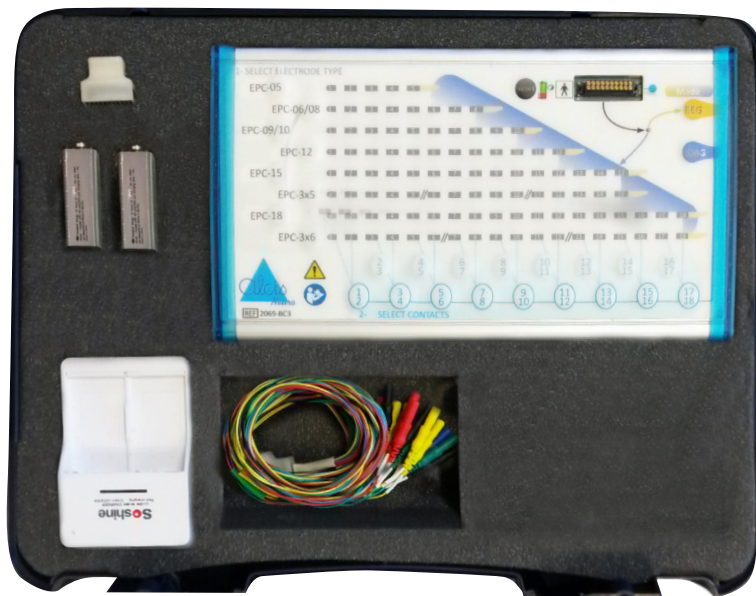
■ Kit Connecting Box

2069-BC3-KIT2

The kit Connecting box **CE** marked includes:

- > connecting box (ref. 2069-BC3),
- > EEG cable (ref. 2069CE-18c-150-B-FB5),
- > testing device,
- > battery charger with 2 batteries,
- > IFU of the kit.

The kit is provided in a plastic briefcase.



The Alcis connecting box allows, **in user friendly and a safe way** to:

- > avoid misconnections,
- > select the type of depth electrode connected,
- > select the couple of contacts to coagulate,
- > control directly after coagulation the EEG signal.
(requires to connect a EEG recording system)

**Assembly of non sterile, non sterilizable, reusable Class II b and III medical device.
Compliant to NF EN 60601-1 (A1/2014), NF EN 60601-2-26 (2015)
NF EN IEC 60601-2-2 (2018), electrical standards.**

■ Extension cable

Range 2069 - CE

Alcis Extension Cables are intended to create a link from intracerebral depth electrodes (range 2069-EPC) to a **EEG recording system**.

References	Nb of contacts	Length	Plug (recorder side)	Cable specifications	Packaging
2069-CE-05c-150-B-FB5	5	150 cm	Insulated plugs Ø 1,5 mm FB5 = minimal center-to-center connection distance : 5 mm	B = braided	Unitary Non Sterile
2069-CE-08c-150-B-FB5	8				
2069-CE-10c-150-B-FB5	10				
2069-CE-12c-150-B-FB5	12				
2069-CE-15c-150-B-FB5	15				
2069-CE-18c-150-B-FB5	18				
2069-CE-XXc-III(-B-FB5)*	Custom made - please contact us				

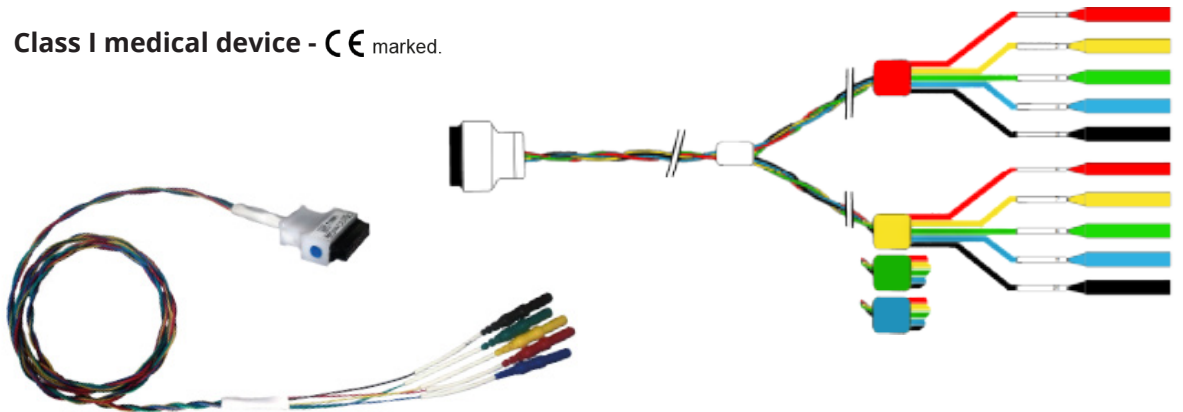
*to define reference, replace:

- III by the length in cm,
- XX by the number of contacts.

- > A coding, integrated to the connection casing helps to reduce the risk of connection errors,
- > A marker (blue dot) enables a quick retrieval of connection direction,
- > A color coding helps to quickly identify the wire order,
- > Compatible with removable link 2023-CE-L2 to secure the electrode connection with the cable.

Box of 1 unit. Provided not sterile

Class I medical device - CE marked.



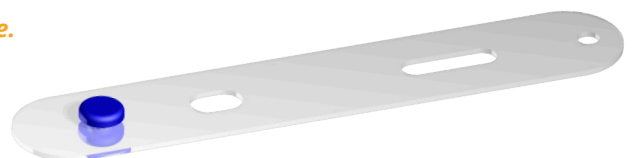
■ Removable link

2023-CE-L2

Removable link is intended to ensure a safe maintenance of connection between electrode connector and extension cable connector.

Pouch of 5 reusable units. Provided not sterile.

Class I medical device - CE marked.



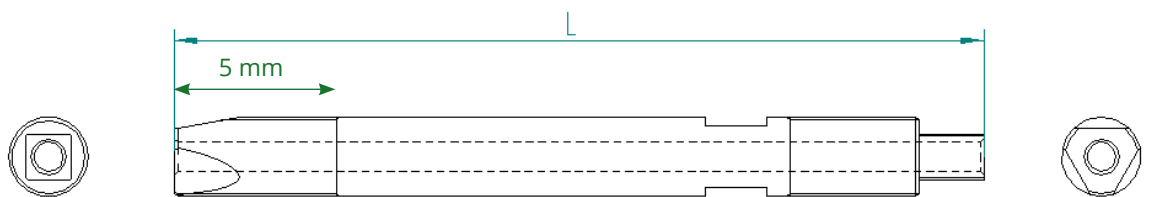
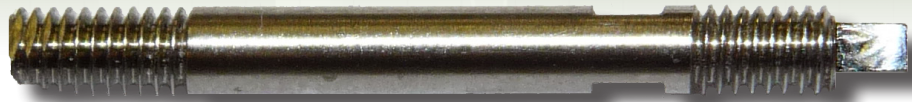
ACCESSORIES



■ GUIDANCE SCREW

RANGE : 2023-VG

This range of product allows to implant depth electrodes and introduce stylet with a maximum of guidance effect and allows robots positioning.



References	Length (mm) (L)	Material	Packaging
2023-VG-15	15	Titanium alloy	Box of 10 sterile units (individual pouch)
2023-VG-20	20		
2023-VG-25	25		
2023-VG-30	30		
2023-VG-35	35		

- > Calibrated for ID 2.5mm guide,
- > Self-threading extremity for direct fixation in a 2.1 mm diameter mm osseous hole,
- > Adapted for MRI location,
- > Two external flats for extraction with Alcis wrench 2023-CL,
- > Use exclusively with Alcis depth electrode range 2069-EPC,
- > Set exclusively with Alcis screwdriver range 2023-TO,
- > Realize with seal and cap a watertight connection with electrode,
- > Ethylene oxide sterilized,
- > Single use.

Class III medical device - CE 1014 marked



SHORT GUIDANCE SCREW



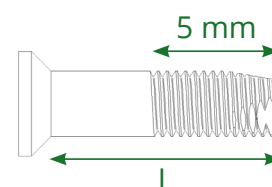
MEG compatible

RANGE : 2023-VG-C-II

- > Short guidance screw perform with cap and seal integrated to the screw a tight fixing of the electrode. It allows a minimum obstruction on external patient cranium.
- > Each short guidance screw is provided with:
 - A guide helping to ensure the realization of a pre-hole with a stylet range 2023-ST through trajectory given by the guidance screw,
 - A thin cap limiting space above guidance screw,
 - A retainer ring maintaining electrode closest to cap.

Alcis Neuro exclusive

References	Length (mm) (L)	Material	Packaging
2023-VG-C-10	10	• Titanium alloy • Silicone • Polymer	Box of 10 sterile units (individual pouch including: screw, guide, cap and retainer)
2023-VG-C-15	15		
2023-VG-C-20	20		
2023-VG-C-25	25		
2023-VG-C-30	30		



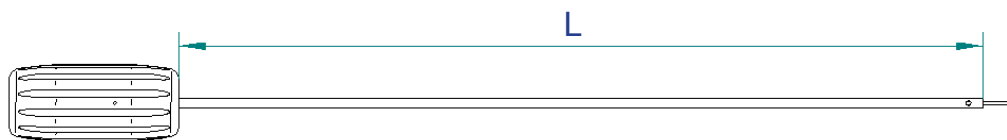
- > Use exclusively with Alcis depth electrode range 2069-EPC,
- > Set with Alcis screwdriver, 2023-TO-C-III and ALCIS clamp 2023-PIN (see 2023-AVG-C-FT technical form),
- > In the event of difficulty for the screwing / unscrewing of the cap, use exclusively screwdriver Alcis 2023-TO-BC,
- > Self-threading extremity for direct fixation in a 2.1 mm diameter osseous hole,
- > MRI and MEG compatible,
- > Ethylene oxide sterilized,
- > Single Use.

Class III medical device - CE 1014 marked

■ CONNECTION AND SET UP ACCESSORIES

Range : 2023

SCREWDRIVER 2023-TO



For standard guidance screw

References	Length L (mm)	Material	Packaging
2023-TO-020	20	Stainless steel (body) POM (handle)	Unitary non sterile
2023-TO-160	160		

For short guidance screw

References	Length L (mm)	Material	Packaging
2023-TO-C-020	20	Stainless steel (body) POM (handle)	Unitary non sterile
2023-TO-C-160	160		

- > EXCLUSIVELY DEDICATED TO SET ALCIS GUIDANCE SCREW RANGE 2023-VG,
- > Calibrated for ID 2.5 mm stereotactic guide (except length 20),
- > Supplied non sterile,
- > Re-usable device designed for steam sterilization at 134°C

Class I medical device - CE marked

CONNECTION AND SET UP ACCESSORIES

Range : 2023

WRENCH 2023-CL

References	Useful opening (mm)	Material	Packaging
2023-CL	1.9	Stainless steel	Unitary non sterile
2023-CL-C	3.5		

- > Designed to unlock alcis guidance screw range 2023-VG and short guidance screw range 2023-VG-C,
- > Elbowed for better use,
- > Supplied non sterile,
- > Re-usable device designed for steam sterilization at 134°C.



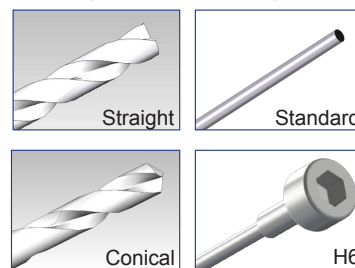
Class I medical device - CE marked

DRILL 2023-FO

References	Total length (mm)	Cutting length (mm)	Material	Distal shape	Proximal end	Packaging
2023-FO-III (-C1-H06)	140	20	Stainless steel	Straight or Conical	Standard or H6	Unitary non sterile
	200					
	250					

to determine the reference, replace III by the wanted length (in mm), add -C1 for conical shape, add -H6 for H6 hexagonal base.

Other total length III in the limit of 250 mm realizable on request.



- > DESIGNED TO PERFORM Ø2.1 mm OSSEOUS HOLE, to place the guidance screw (standard or short)
- > Compatible with ID 2.5 mm stereotactic guide,
- > Compatible with Alcis depth stop 2036-BU-25-RU to ease control of drilling depth,
- > Other designs available see 2036-AS-FT technical form.
- > Provided non sterile,
- > Reusable device designed for steam sterilization at 134°C

Class III medical device - CE 1014 marked

■ GRADUATED RULERS

Range 2023-TG



References	Material	Packaging
2023-TG2	Polymer	Unitary non sterile

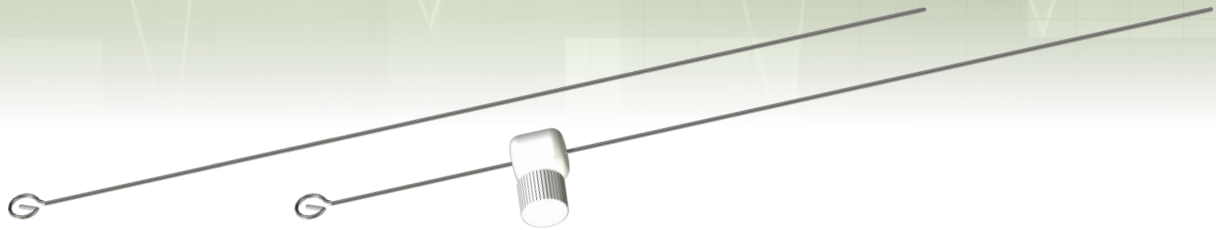
2023-TG2 SEEG GRADUATED RULER

- > Allows to control on one side the insertion depth of the tools (drill, coagulation electrode, screwdriver),
- > Allows to control on the other side the implantation length of the depth electrodes,
- > The electrode is directly put with its protective tube on the ruler. Just pull the electrode to adjust the implantation length,
- > Ruler length: 200 mm,
- > Maximal measure length: 200 mm,
- > Accuracy: 0.75 mm,
- > Measurement constant: 0.25 mm,
- > Compatible with ALCIS tools from ranges 2023, 2036 and 2069,
- > Provided non sterile,
- > Reusable devices, compatible with steam sterilization at 134°C.

Class Im medical device - CE 1014 marked

■ CONNECTION AND SET UP ACCESSORIES

Range : 2023



SINGLE USE STYLET 2023-ST

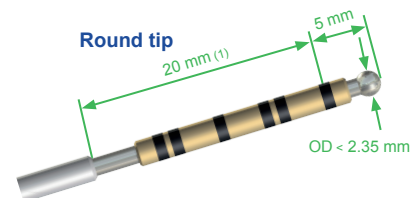
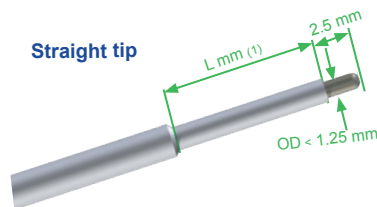
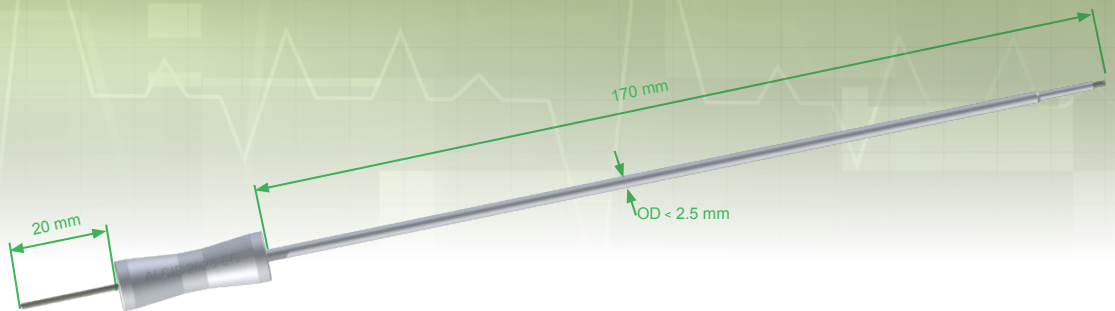
References	Minimum useful length (mm)	OD (mm)	Stopper	Material	Packaging
2023-ST-AB	120	0.8	Yes	Stainless steel (stylet) Polymer (stopper)	Box of 10 sterile units, (individual pouch)
 2023-ST-SB	While stocks last until July 2021	0.8	No		
2023-ST-xB(-III)	Custom made (length up to 250 mm) - please contact us				


- > Designed to realise a 0.8mm OD first hole to ease the depth electrode introduction,
- > Soften distal end,
- > Supplied with adjustable depth-stop 2023-BU-08-UU to ease, the control of insertion depth,
- > Ethylene oxide sterilized,
- > Single use.

Class III medical device - CE 1014 marked

COAGULATION ELECTRODES

Range 2023-EC



References	Shape	Insulated Distal Length (mm) (1)	Active OD	Active Length (mm)	Materials	Packaging
2023-EC-30-STD	Straight	30	1.20mm	2.5	Stainless steel (body)	Unitary non sterile
 2023-EC-20-B24	Round	20	2.35mm	5.0	Polymere (handle and insulating part)	

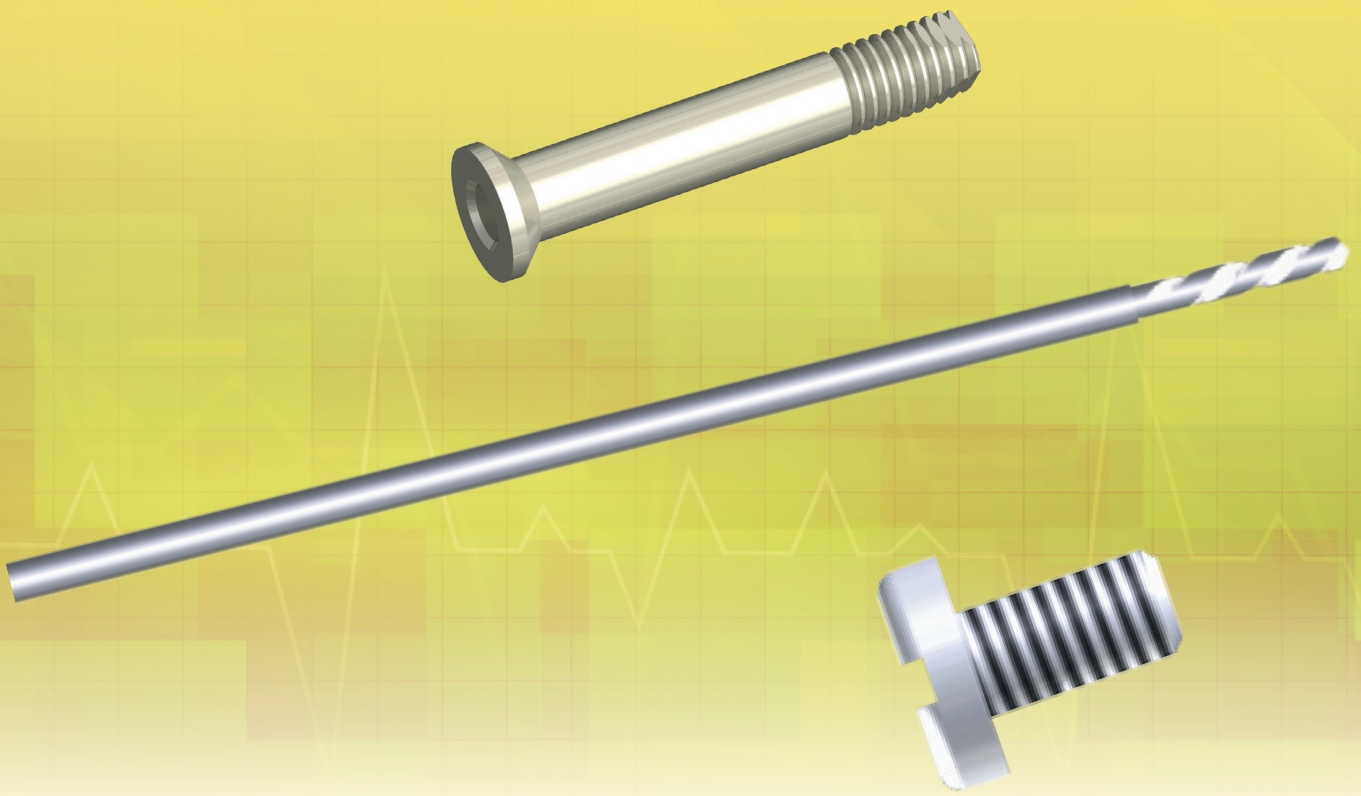
- > MONOPOLAR ELECTRODE intended to coagulate the dura mater or skin (round tip) by thermocoagulation for stylet introduction,
- > Compatible with ID 2.5 mm stereotactic guides,
- > Compatible with single use Alcis depth stop 2036-BU-25-RU,
- > Provided non sterile,
- > Reusable material designed for steam sterilization at 134°C.

Class IIb or III medical device - CE 1014 marked

 **Adaptator Rosa Réf. 2036-CP2**

 While stocks last until July 2021

STEREOTAXY

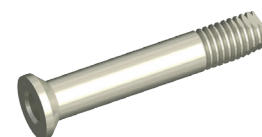


■ BONE FIDUCIAL GUIDANCE SCREW

Range 2023-VG-CM

ALCIS short guidance screws can be used as bone fiducial during surgeries performed with robots. These screws are available in several length in order to adapt to the patient's anatomy.

References	Length	Materials	Packaging
2023-VG-CM-10	10 mm	Titanium alloy TiAl6V4 ISO 5832-3	Box of 10 unitary pouch
2023-VG-CM-15	15 mm		
2023-VG-CM-20	20 mm		
2023-VG-CM-25	25 mm	Silicon	Sterile EO
2023-VG-CM-30	30 mm		



Single use - Class III medical device **CE** 1014 marked

ACCESSORIES - OBTURATOR CAP - 2036-BO-VGC-SB1

- > Cap to close the inner channel of the screw, apart from surgical steps,
- > Sterile EO, single use, box of 10 pouches of 10 units,
- > Supplied non sterile Nylon.



IMPLANTATION/EXPLANTATION ANCILLARIES



- Drill ref. 2023-FO-100-C1. For osseous drilling,



- Suppressive guiding stopper
ref. 2036-BU-25-RU-GSxx For the control of
drilling depth,



- Screwdriver ref. 2023-TO-C-020
For the implantation of screws,



- Wrench ref. 2023-CL-C.
For the explantation of screws,

- > Unitary packaging - non sterile,
- > Reusable devices, designed for steam sterilization at 134°C.

Class I or III medical device - CE or CE 1014



While stocks last
until July 2021

STEREOTACTIC ACCESSORIES

Range: 2036

PERCUTANEOUS SCREW 2036-VP

The PERCUTANEOUS SCREW and their ACCESSORIES contribute to :

- > a **reproducible fixation** of stereotactic frame such as Leksell (using adaptation range 2051), Talairach one or similar (set with screw 2036-VP + spacer 2036-ENT or 2051-ENT),
- > the **realization of MRI imaging** (frameless imaging) by using:
 - (1) screw 2036-VPx2
 - (2) only screw 2036-VPx2-M (IRM marker + RX integrated)

> the **scanner imaging without any artefact and with the location of screw position** (imaging with or without frame):

- (1) screw 2036-VPx
- (2) only screw 2036-VPx-M seule (MRI + RX marker integrated)

(1): imaging fusion easier due to similar positions of MRI and RX markers.

(2): marker constituted of a solution visible with MRI and SCANNER.



While stocks last until July 2021

References	Designation	Integrated marker	L1 (mm)	L3 (mm)	L4 (mm)	Materials	Packaging
2036-VPA2-M	VP Adult	Yes*	19.0	13.0	9.0	Polymer with superior physic capacity	20 sterile units box packaged by pouch of 4 units



- > SET EXCLUSIVELY WITH A SCREWDRIVER ALCIS 2036-TO-III in a osseous hole \varnothing 6 mm realizable with a drill such as ALCIS 2036-FO-III type,
- > 2036-VPx: do not generate any MRI neither SCANNER artefact,
- > Ethylene oxide sterilized,
- > Single use .

Class III medical device - CE 1014

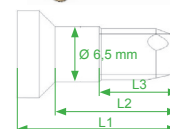
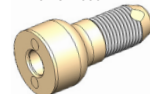


While stocks last until July 2021

Percutaneous screw 2036-VPx



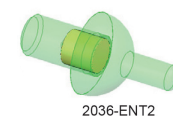
Percutaneous screw with marker 2036-VPx-M



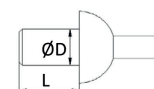
STEREOTACTIC ACCESSORIES

Range: 2036

References	L (mm)	\varnothing D (mm)	Material	Packaging
2036-ENT2	10	6	Polymer with Titanium marker (\varnothing 5 x 5 mm)	Pouch of 4 non sterile units
Other dimensions realizable on request				



2036-ENT2



- > TO BE USE EXCLUSIVELY WITH PERCUTANEOUS SCREW ALCIS 2036-VP,
- > Proximal side designed to be use with stereotactic frame equipped with guide or screw pillar compatible with centring \varnothing D and length L,
- > Supplied non sterile - Reusable material designed for autoclave sterilisation at 134°C.

CE marked



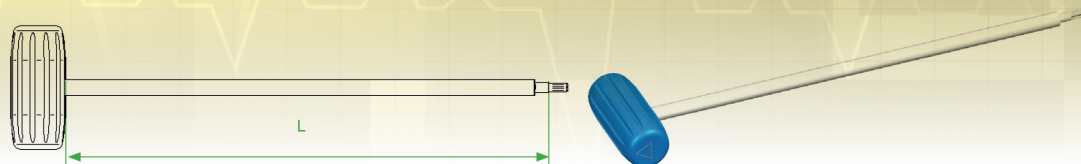
While stocks last until July 2021

STEREOTACTIC ACCESSORIES

Range: 2036

SCREWDRIVER 2036-TO

(accessory for percutaneous screw)



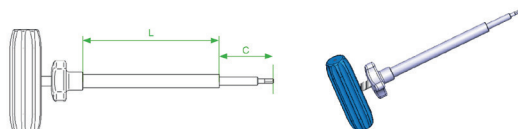
References	L (mm)	Material	Packaging
2036-TO2-T-080	80	Polymer	Unitary non sterile

- > TO BE USE EXCLUSIVELY WITH THE ALCIS PERCUTANEOUS SCREW 2036-VPx,
- > Proximal side designed for use with stereotactic frames provided with compatible guides (\varnothing D and centering length L),
- > Supplied non sterile - Reusable material designed for autoclave sterilisation at 134°C.

CE marked

SCREWDRIVER 2036-TO-EXT-60

(accessory for percutaneous screw and NATAF adaptation kit range 2051)



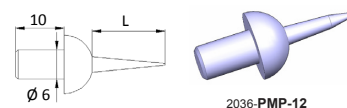
References	Dimensions (mm)	Material	Packaging
2036-TO-EXT-60	Useful length (L): 240 Extraction stroke (C): from -7 to +38	Stainless steel (body) Polymer (handle)	Unitary non sterile

- > TO BE USE EXCLUSIVELY WITH ALCIS percutaneous screw 2036-VP and Nataf adaptation kit (range 2051),
- > Supplied non sterile - Reusable material designed for autoclave sterilisation at 134°C.

CE marked

PERCUTANEOUS MONOBLOC POINT

References	\varnothing D (mm)	Material	Packaging
2036-PMP-12	2.9	Stainless steel	Unitary non sterile



- > Designed to be place at the distal extremity of micrometric stereotactic frame screw, they contribute to the frame fixing with patient head. Type PMP : Percutaneous Monobloc Point,
- > Proximal side designed to be use with stereotactic frame equipped with guide or screw pillar compatible with centring of \varnothing 6 mm and length 10 mm,
- > Supplied non sterile - Re-usable material designed for autoclave sterilisation at 134°C.

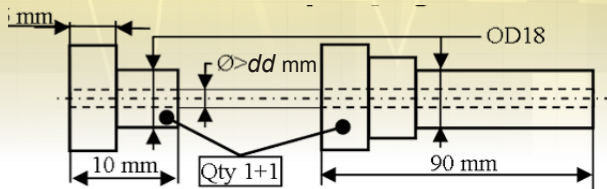
CE 1014 marked

While stocks last until July 2021

STEREOTACTIC ACCESSORIES

Range: 2036

DRILLING GUN 2036-CPX



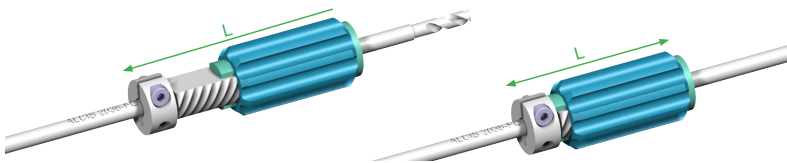
References	L (mm)	Ø D (mm)	Material	Packaging
2036-CP1-025	10 / 90	2.5	PEEK	Unitary non sterile

While stocks last until July 2021

- > Adaptable on OD 2.5 or 6 mm instruments (drill 2033-FO or 2036-FO),
- > Allows the control the trajectory of insertion of these instruments,
- > Supplied non sterile - Reusable material designed for autoclave sterilisation at 134°C.

CE marked

ADJUSTABLE STOPPER 2036-BRU (for drill range 2036-FO-III-XX)

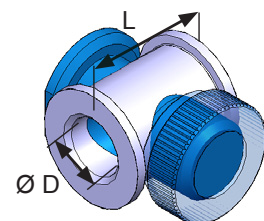


References	L (mm)	Ø D (mm)	Material
2036-BRU-1-60-RU	70 to 100	6	Stainless steel

While stocks last until July 2021

- > Stopper supplied without drill,
 - > Adaptable on OD 6 mm instruments (drill 2036-FO),
 - > Allows the control of insertion depth of these instruments,
 - > Supplied non sterile - Re-usable material designed for autoclave sterilization till 134°C.
- CE 1014 marked

References	L (mm)	Ø D (mm)	Material	Packaging
2036-BU-60-RU	13	> 6,00	Stainless steel	Unitary non sterile
2036-BU-25-RU	10	> 2,5	Stainless steel	sterile



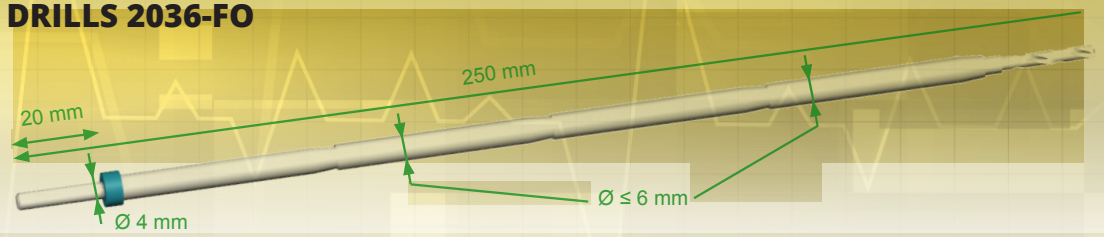
- > Adaptable on OD 2.5 or 6 mm instruments,
- > ALLOWS THE CONTROL OF INSERTION DEPTH OF THESE INSTRUMENTS,
- > Supplied non sterile - Re-usable material designed for autoclave sterilization till 134°C.

Class I medical device - CE marked

STEREOTACTIC ACCESSORIES

Range: 2036

DRILLS 2036-FO

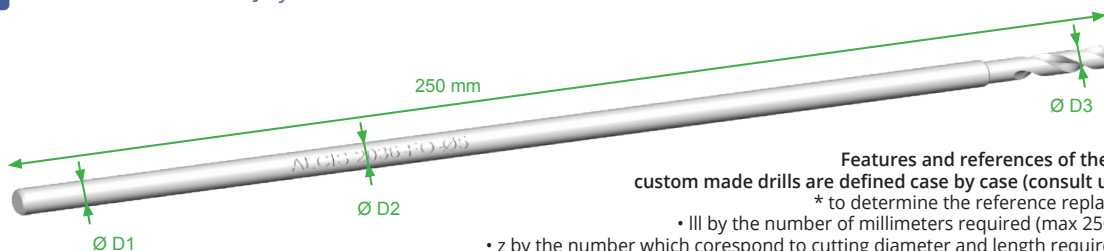


References	Length (mm)	body Ø (mm)	Cutting length(mm)	cutting Ø (mm)	Material	Packaging
2036-FO-250-29	250	6	20	2.9	Stainless steel and polymer	Unitary non sterile

- > Compatible with an ID ≥ 6 mm stereotactic guide.
- > Usable with mobile depth stop Alcis 2036-BU-60-RU to facilitate control of drilling depth
- > Supplied with a fixed stop for using with micrometric frame screw
- > Supply with polymer guide to decrease the friction
- > Supplied non sterile - Re-usable material designed for autoclave sterilization at 134°C

Class III medical device - C€ 1014 marked

While stocks last until July 2021



Features and references of these custom made drills are defined case by case (consult us).
 * to determine the reference replace:
 • III by the number of millimeters required (max 250);
 • z by the number which correspond to cutting diameter and length required.

References	L (mm)	Ø D1 shank (mm)	Ø D2 body (mm)	Ø D3 cutting (mm)	Cutting Lg	Cutting	Material	Packaging	
2036-FO-III-T1/z	III	Type 1 : cutting Ø = body Ø = shank Ø				14	Straight	Stainless steel	Unitary non sterile
2036-FO-III-T1/1		2,45							
2036-FO-III-T1/2		2,5							
2036-FO-III-T2/z	Type : cutting Ø # body Ø = shank Ø				20	120°			
2036-FO-III-T2/3	Ø 6		Ø 5						
2036-FO-III-T2/4			Ø 5,2						

- > Adaptable length within 250 mm / Drilling Ø marked on product.

While stocks last until July 2021

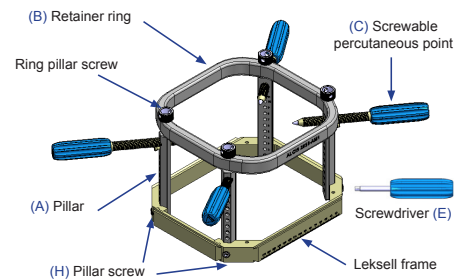
KITS ADAPTATION NATAF

(Leksell Frame adapted to become REPOSITIONNABLE)

RANGE : 2051

References	Material	Qty
2034-KG-002	Ring Pillar screw (G)	4

While stocks last until July 2021





ALCIS

MANUFACTURING / ORDER / DELIVERY

Temis Sante - Bat. Bioparc
2 rue du Professeur Milleret
25000 BESANCON - FRANCE



commercial@alcis.net
jpbarbault@alcis.net



+33(0)3 81 61 69 93



+33(0)6 87 73 97 37

www.alcis.net

Availability of these products might vary from a given country or region to another, as a result of specific local regulatory approval or clearance requirements for sale in such country or region.

Read carefully the instructions for use for complete clinical instructions. Non contractual document. Alcis reserves the right, without prior notice, to modify the products in order to improve their quality.

WARNING: Applicable laws restrict these products to sale by or on the order of a physician. All the references numbers mentioned on this document are CE or CE1014 marked according to European council directive 93/42/EEC on medical devices and its relatives, unless specifically identified as "NOT CE MARKED." Legal Manufacturer : ALCIS – Besançon, France.